

1. Electrolytic Capacitor Life(壽命降額曲線)

※Character Condition(特性條件) :

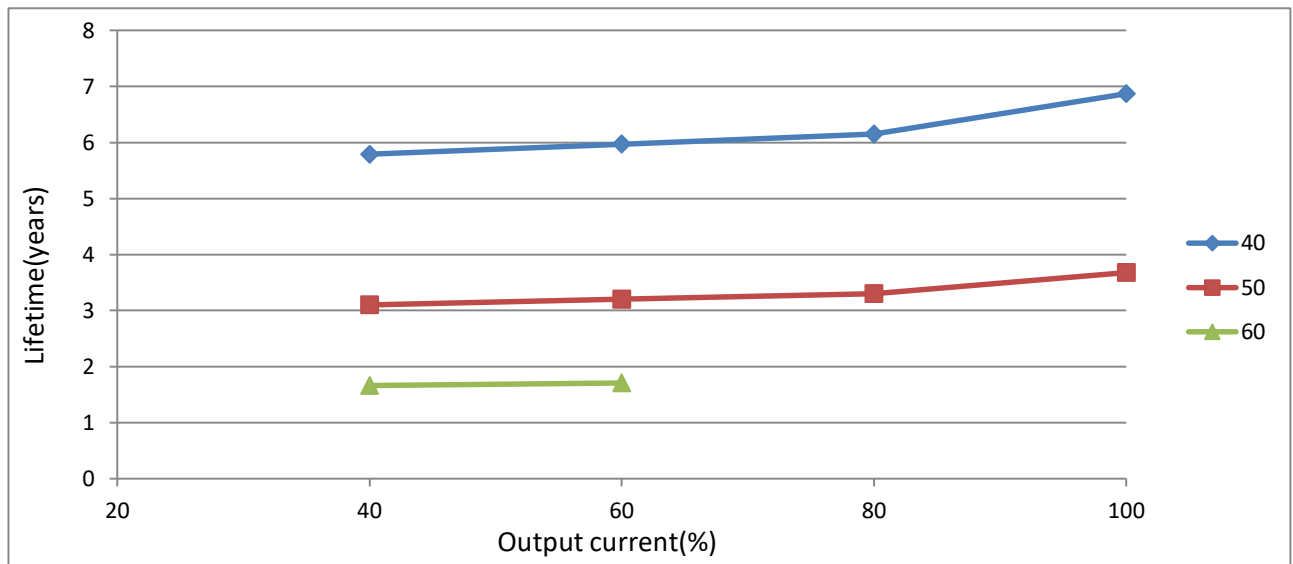
1	I/P Voltage(Vac)(輸入電壓)	100V
2	I/P Frequency(Hz)(輸入頻率)	50Hz
3	Output load(輸出負載)	40%~Full Load
4	Ambient Temp.(°C)(環境溫度)	40°C/50°C/60°C
5	Sample Size(取樣數)	1PCS
6	Mounting Method(取付方法)	Mounting A

※Character Equipment(特性設備) :

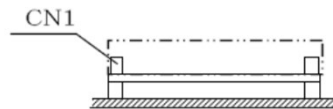
1	Equipment Item(設備)	Model No. / Manufacturer(製造商和型號)
2	AC Source(變頻器)	ALL POWER/APG-1005N
3	Power Meter(功率表)	IDRC/CP-260
4	DC load(DC負載)	Prodigit/3302C
5	Oscilloscope(示波器)	Tektronix/TDS3014B

※Character Data(特性數據) :

壽命曲線圖					
Output current(%)		40	60	80	100
Temperature (°C)	40	5.79	5.97	6.15	6.87
	50	3.1	3.2	3.3	3.68
	60	1.66	1.71		



Mounting A



2.Electrolytic Capacitor Life(壽命降額曲線)

※Character Condition(特性條件) :

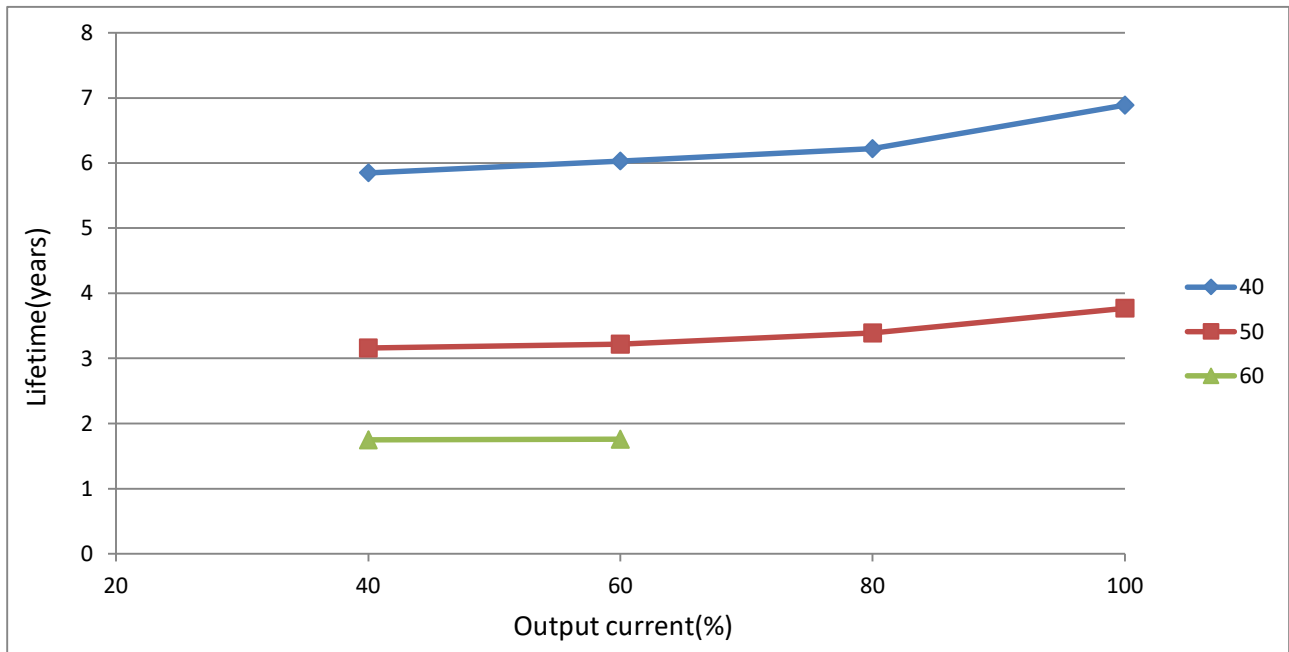
1	I/P Voltage(Vac)(輸入電壓)	100V
2	I/P Frequency(Hz)(輸入頻率)	50Hz
3	Output load(輸出負載)	40%~Full Load
4	Ambient Temp.(°C)(環境溫度)	40°C/50°C/60°C
5	Sample Size(取樣數)	1PCS
6	Mounting Method(取付方法)	Mounting B

※Character Equipment(特性設備) :

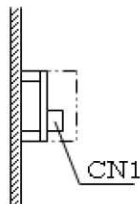
1	Equipment Item(設備)	Model No. / Manufacturer(製造商和型號)
2	AC Source(變頻器)	ALL POWER/APG-1005N
3	Power Meter(功率表)	IDRC/CP-260
4	DC load(DC負載)	Prodigit/3302C
5	Oscilloscope(示波器)	Tektronix/TDS3014B

※Character Data(特性數據) :

壽命曲線圖					
Output current(%)	40	60	80	100	
Temperature (°C)	40	5.85	6.03	6.22	6.89
	50	3.16	3.22	3.39	3.77
	60	1.75	1.76		



Mounting B



3. Electrolytic Capacitor Life (壽命降額曲線)

※Character Condition (特性條件):

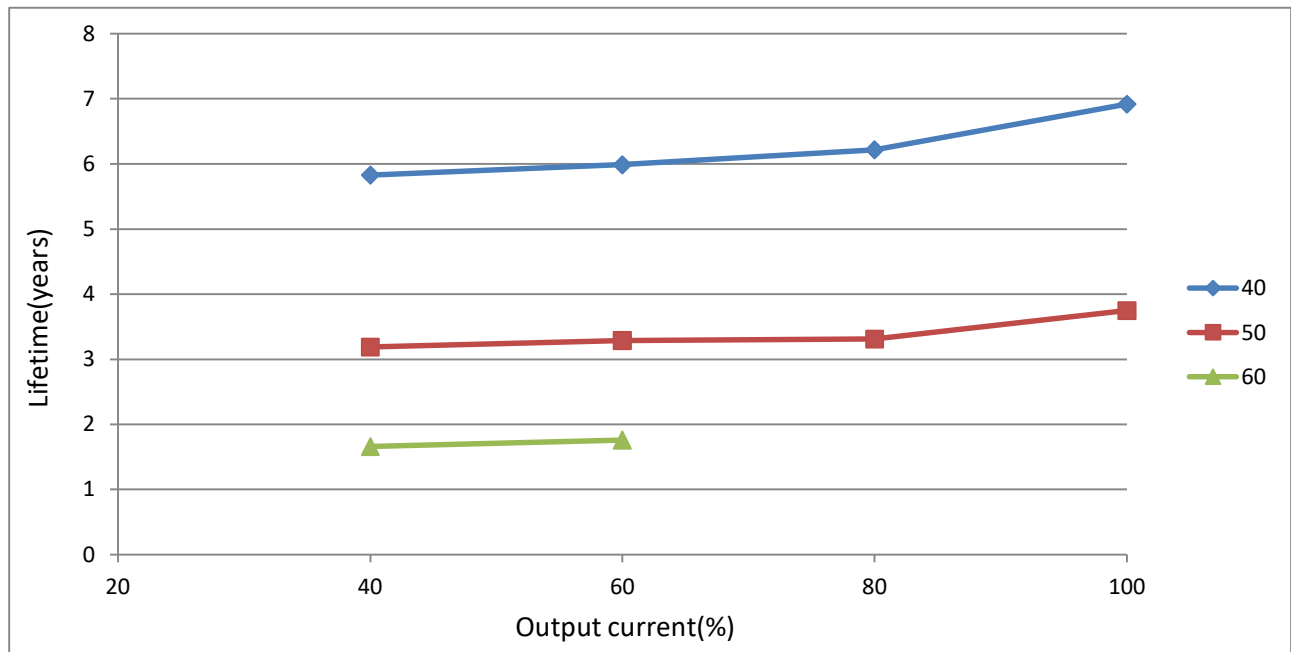
1	I/P Voltage (Vac) (輸入電壓)	100V
2	I/P Frequency (Hz) (輸入頻率)	50Hz
3	Output load (輸出負載)	40%~Full Load
4	Ambient Temp. (°C) (環境溫度)	40°C / 50°C / 60°C
5	Sample Size (取樣數)	1PCS
6	Mounting Method (取付方法)	Mounting C

※Character Equipment (特性設備):

1	Equipment Item (設備)	Model No. / Manufacturer (製造商和型號)
2	AC Source (變頻器)	ALL POWER/APG-1005N
3	Power Meter (功率表)	IDRC/CP-260
4	DC load (DC負載)	Prodigit/3302C
5	Oscilloscope (示波器)	Tektronix/TDS3014B

※Character Data (特性數據):

壽命曲線圖					
Output current (%)	40	60	80	100	
Temperature (°C)	40	5.83	5.99	6.22	6.92
	50	3.19	3.29	3.31	3.75
	60	1.66	1.76		



Mounting C

